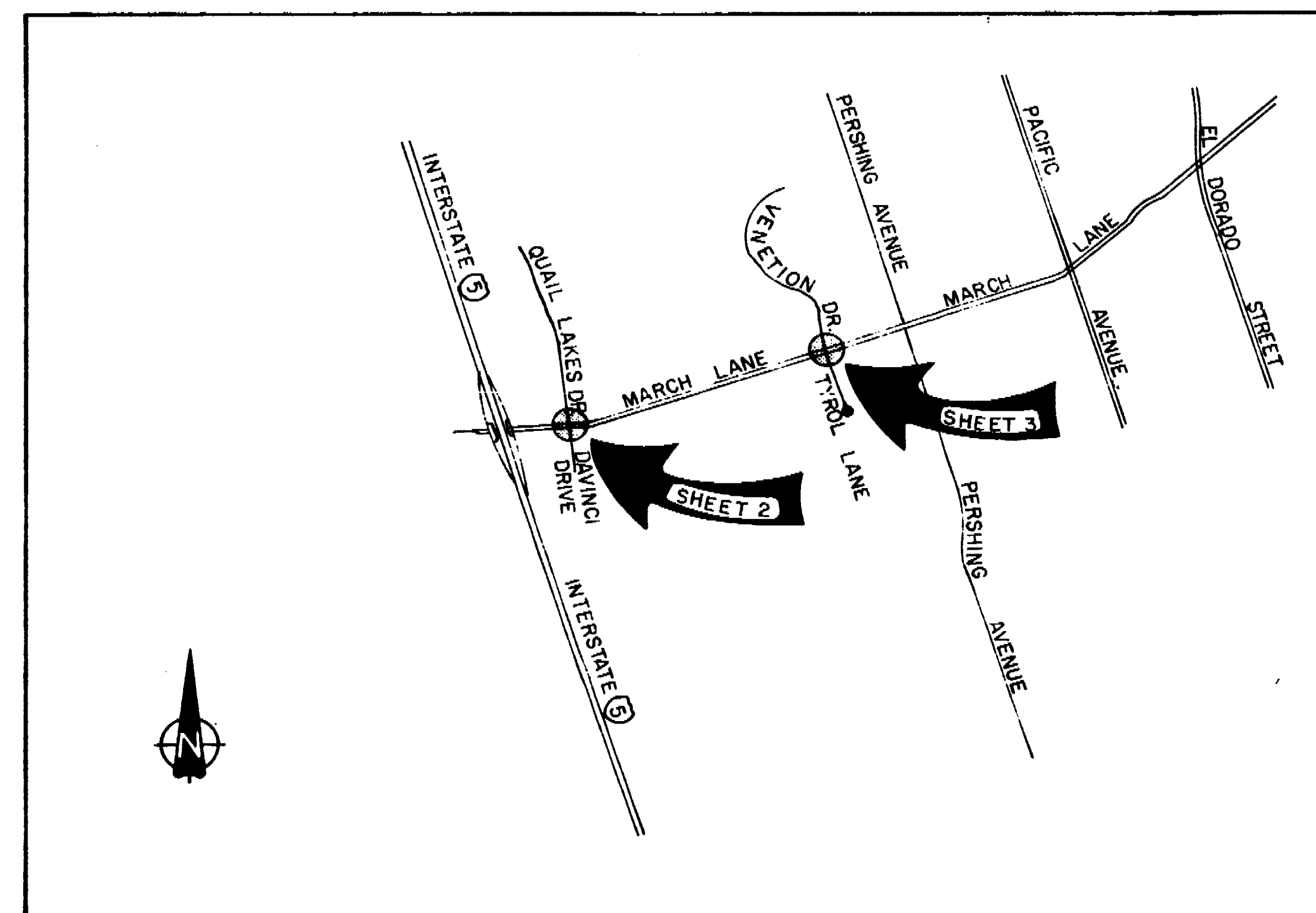


APPLICABLE CALIF. DEPT. OF TRANSPORTATION STANDARD PLANS, MARCH, 1977

ES - 1A	ES - 3B	ES - 4C	ES - 6J	ES - 6T
ES - 1B	ES - 3C	ES - 5A	ES - 6L	ES - 8
ES - 2A	ES - 4A	ES - 5C	ES - 6Q	ES - 10
ES - 2B	ES - 4B	ES - 6A	ES - 6S	ES - 11
ES - 3A				ES - 13

CITY OF STOCKTON

TRAFFIC SIGNAL INSTALLATIONS MARCH LANE and QUAIL LAKES DRIVE / DA VINCI DRIVE MARCH LANE and VENETIAN DRIVE / TYROL LANE



PROJECT LOCATIONS
NO SCALE

LEGEND

EXISTING UTILITIES

---	RIGHT-OF-WAY
-E-	ELECTRICAL
-G-	GAS MAIN
-W-	WATER MAIN
-D-	STORM DRAIN
-S-	SANITARY MAIN
-T-	TELEPHONE
○	MANHOLE
⊞	CATCH BASIN
⊙	WATER VALVE
⊚	GATE VALVE
⊛	FIRE HYDRANT

INDEX TO SHEETS

SHEET 1	TITLE SHEET
SHEET 2	MARCH LANE AND QUAIL LAKES DR. / DA VINCI DR.
SHEET 3	MARCH LANE AND VENETIAN DR. / TYROL LN.

APPROVED BY:

[Signature]
CITY ENGINEER

DATE:

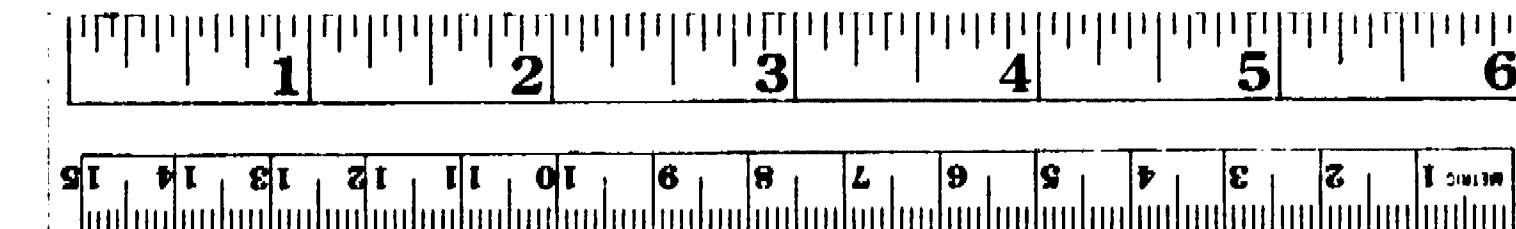
[Date]

PREPARED BY

JKM

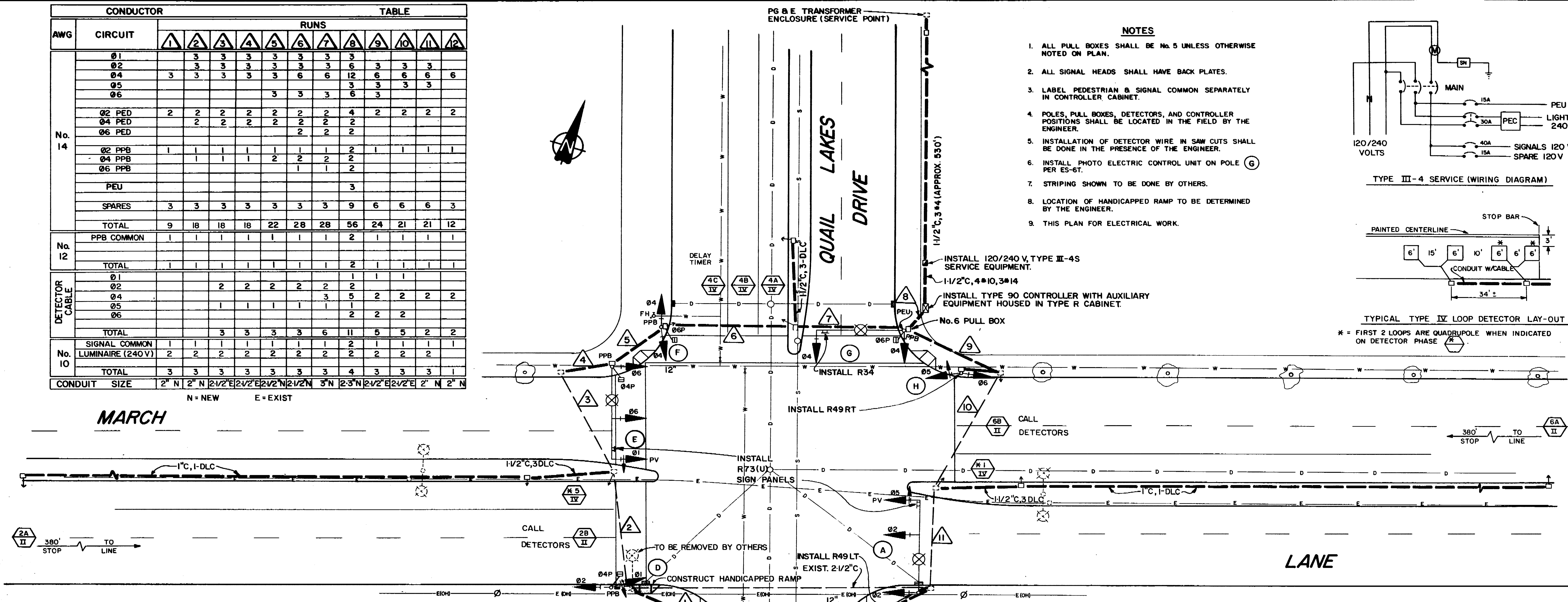
2/35C
 1979 11/18 SHEET

2/35C



CONDUCTOR	TABLE													
	AWG	CIRCUIT	1	2	3	4	5	6	7	8	9	10	11	12
No. 14	Ø1		3	3	3	3	3	3	3	3	3	3	3	3
	Ø2		3	3	3	3	3	3	3	6	6	6	6	6
	Ø4		3	3	3	3	3	6	6	12	6	6	6	6
	Ø5									3	3	3	3	3
	Ø6							3	3	3	6	3		
	Ø2 PED		2	2	2	2	2	2	2	2	4	2	2	2
Ø4 PED		2	2	2	2	2	2	2	2	2	2	2	2	
Ø6 PED							2	2	2					
No. 12	Ø2 PPB		1	1	1	1	1	1	1	2	1	1	1	
	Ø4 PPB		1	1	1	1	2	2	2	2	1	1	1	
	Ø6 PPB						1	1	2					
No. 10	PEU									3				
	SPARES		3	3	3	3	3	3	3	9	6	6	3	
	TOTAL		9	18	18	18	22	28	28	56	24	21	12	
No. 10	SIGNAL COMMON		1	1	1	1	1	1	1	2	1	1	1	
	LUMINAIRE (240 V)		2	2	2	2	2	2	2	2	2	2	2	
	TOTAL		3	3	3	3	3	3	3	4	3	3	3	
CONDUIT SIZE		2" N	2" N	2" N	2" N	2" N	2" N	2" N	2" N	2" N	2" N	2" N	2" N	

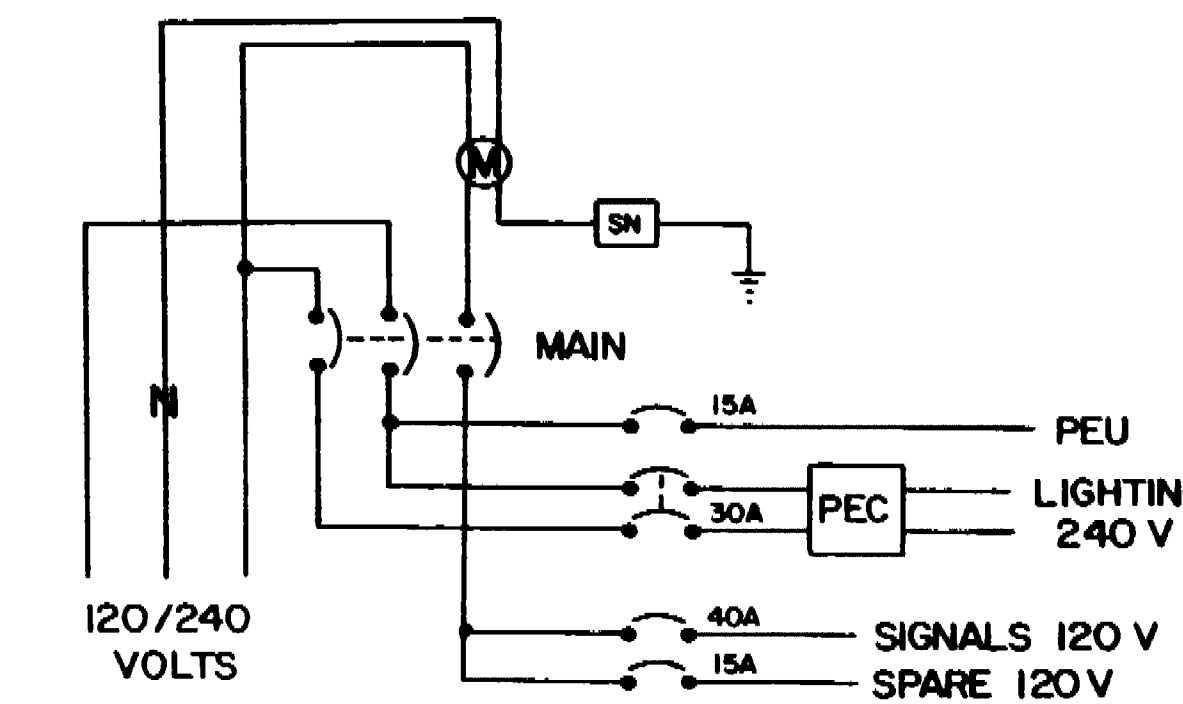
MARCH



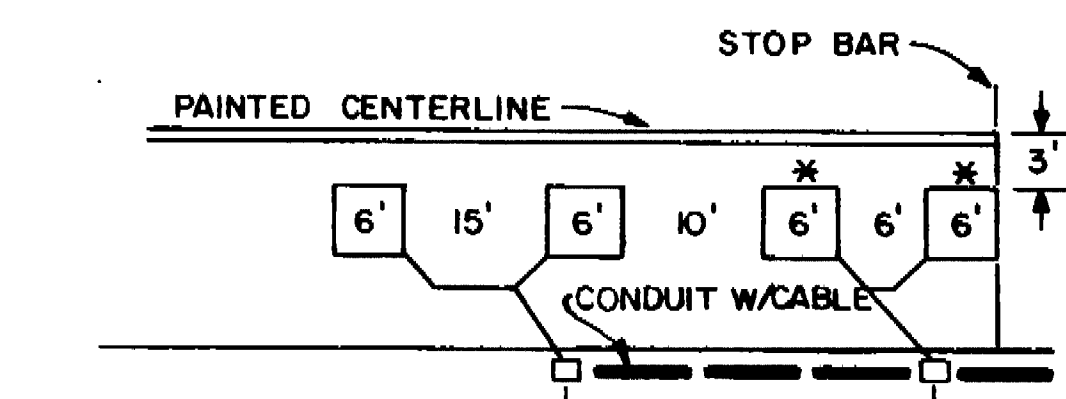
EQUIPMENT SCHEDULE						
LOCATION	STD.	VEHICLE HEADS	EQUIPMENT	PED. HEADS	EQUIPMENT	LUMINAIRES
A	26-3-80	1W3C(12")	MAT			200W HPS
	40SA15LA	1W3C(12")	MAT			
B	10-0"	1W3C(12")	SV-1-T			
	17-1-70	1W3C(12")	TV-2-T			
C	20SA15LA	1W3C(12")	MAT			200W HPS
	10-0"	1W3C(12")	SV-1-T			
D	10-0"	1W3C(12")	TV-2-T			
	10-0"	1W3C(12")	TV-2-T			
E	26-3-80	1W3C(12")	MAT			200W HPS
	40SA15LA	1W3C(12")	MAT			
F	10-0"	1W3C(12")	SV-1-T			
	10-0"	1W3C(12")	TV-2-T			
G	24-3-80	1W3C(12")	MAT			200W HPS
	40SA15LA	1W3C(12")	MAT			
H	10-0"	1W3C(12")	SV-1-T			
	10-0"	1W3C(12")	TV-2-T			

- * = FOUNDATION EXIST
- SA = SIGNAL ARM (LENGTH INDICATED)
- LA = LUMINAIRE ARM (LENGTH INDICATED)
- (GA) = GREEN ARROW LENS
- PV = PROGRAMMED VISIBILITY SIGNAL
- (12") = 12 INCH RED, YELLOW, GREEN LENS
- (12"GA) = 8 INCH RED, YELLOW WITH 12 INCH GREEN ARROW LENS

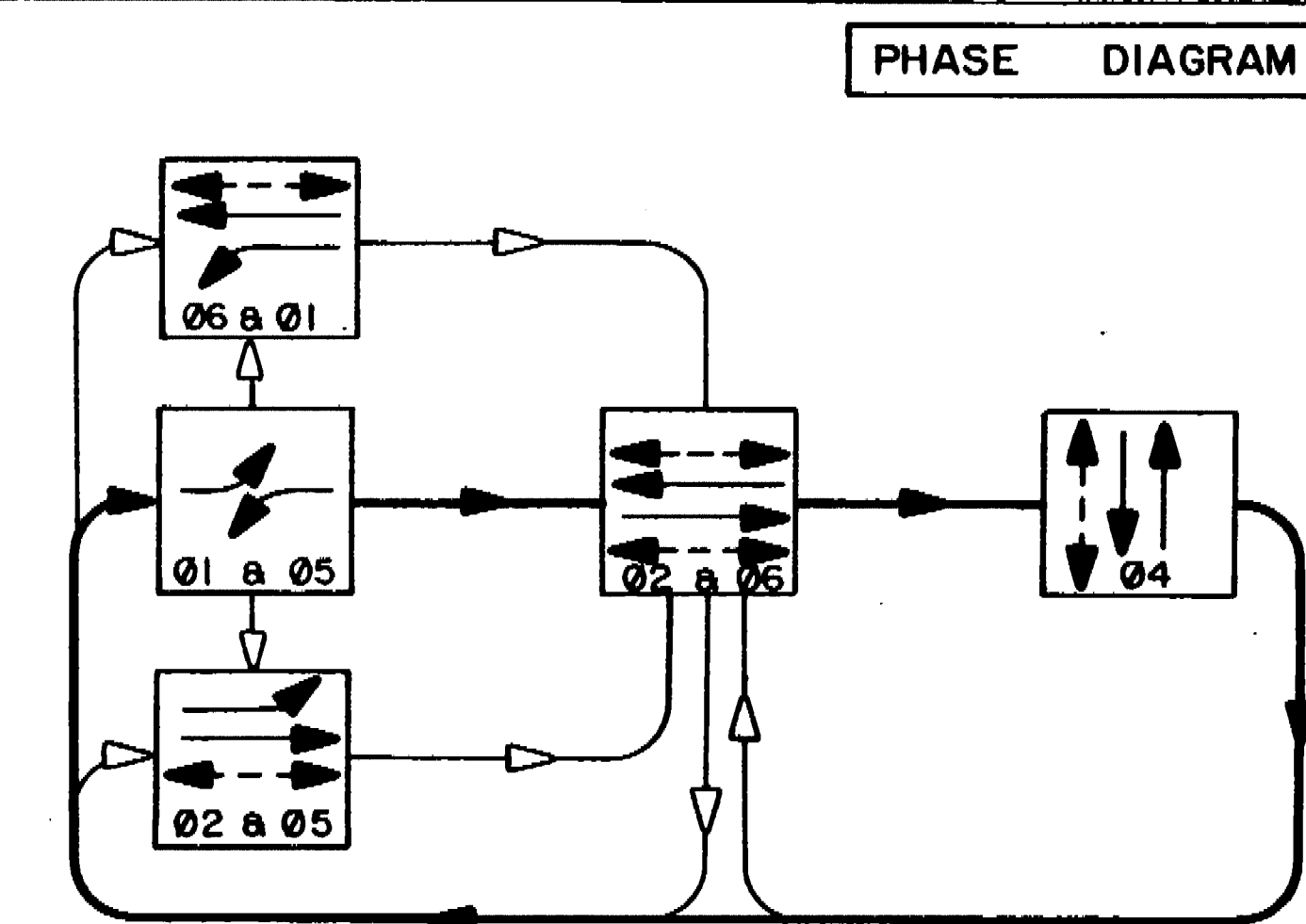
- NOTES**
- ALL PULL BOXES SHALL BE NO. 5 UNLESS OTHERWISE NOTED ON PLAN.
 - ALL SIGNAL HEADS SHALL HAVE BACK PLATES.
 - LABEL PEDESTRIAN & SIGNAL COMMON SEPARATELY IN CONTROLLER CABINET.
 - POLES, PULL BOXES, DETECTORS, AND CONTROLLER POSITIONS SHALL BE LOCATED IN THE FIELD BY THE ENGINEER.
 - INSTALLATION OF DETECTOR WIRE IN SAW CUTS SHALL BE DONE IN THE PRESENCE OF THE ENGINEER.
 - INSTALL PHOTO ELECTRIC CONTROL UNIT ON POLE (G) PER ES-6T.
 - STRIPING SHOWN TO BE DONE BY OTHERS.
 - LOCATION OF HANDICAPPED RAMP TO BE DETERMINED BY THE ENGINEER.
 - THIS PLAN FOR ELECTRICAL WORK.



TYPE III-4 SERVICE WIRING DIAGRAM



TYPICAL TYPE IV LOOP DETECTOR LAY-OUT
* = FIRST 2 LOOPS ARE QUADRUPOLE WHEN INDICATED ON DETECTOR PHASE



- CONTROLLER PHASE MODULES**
- PHASES Ø2 & Ø6 - TYPE DP
 - PHASE Ø4 - TYPE SP
 - PHASES Ø1 & Ø5 - TYPE S
- FLASHING INDICATIONS**
- ALL PHASES - RED



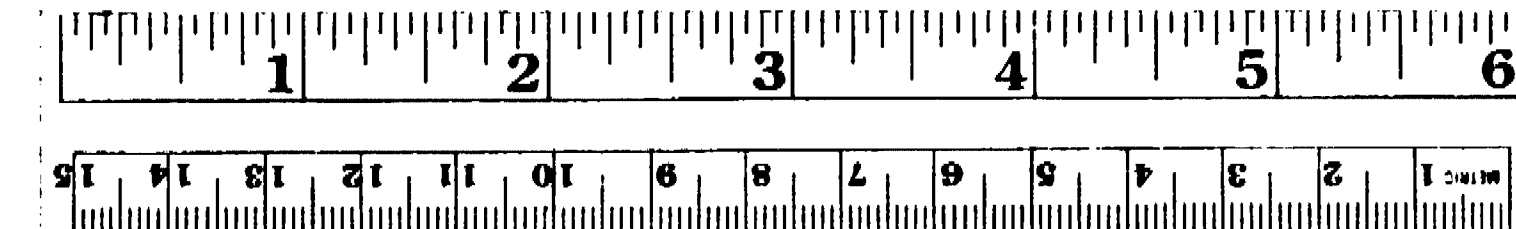
PREPARED BY
JKM
Walnut Creek, California
A.A. Johnson
R.C.E. NO. 18247

MARCH LANE AND QUAIL LAKES DR./DA VINCI DR. TRAFFIC SIGNAL PLAN

DEPARTMENT OF PUBLIC WORKS
CITY OF STOCKTON, CALIFORNIA

SCALE: AS SHOWN	APPROVED BY: DATE 4/10/79	SHEET NO. 2
DESIGNED BY: AA/J/edj	DRAWN BY: PEL/DMP	OF 3 SHEETS
TRACED BY:	CITY ENGINEER	JOB NO.
CHECKED BY: AAJ	STOCKTON, CALIF.	

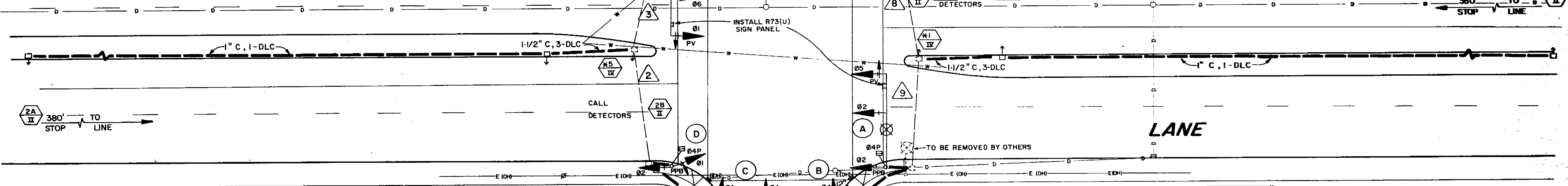
2/35/10



March Lane / Quail Lakes Dr. Traffic Signal Plan
 2/35/10

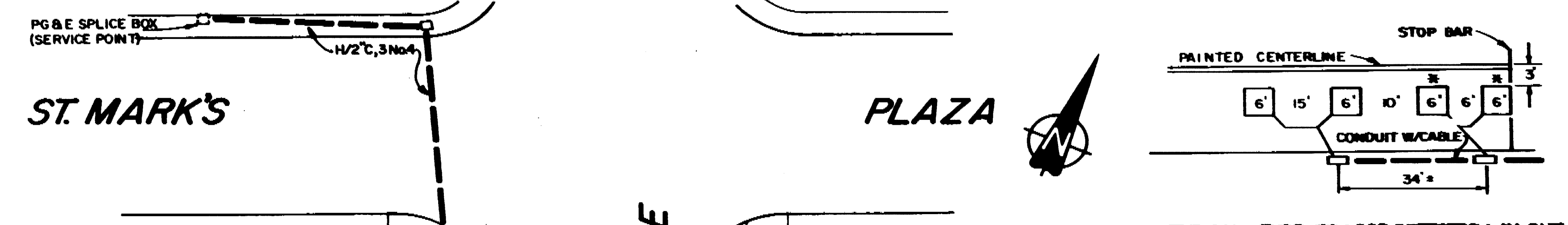
AWG	CIRCUIT	CONDUCTOR RUNS									
		1	2	3	4	5	6	7	8	9	10
No. 14	Q1	3	3	3	3	3	3	3	3	3	3
	Q2	3	3	3	6	6	3	9	3	3	3
	Q4	3	3	3	9	12	9	9	6	6	6
	Q5				3	3	3		3	3	
	Q6				3	3	3				
	Q2 PED	2	2	2	4	4	2		2	2	2
Q4 PED	2	2	2	4	4	2		2	2	2	
Q6 PED				2	2	2					
Q2 PPB	1	1	1	2	2	1		1	1	1	
Q4 PPB	1	1	1	4	4	2		1	1	1	
Q6 PPB				1	2	1					
PEU				3	3						
SPARES	3	3	3	9	9	6	3	3	3	3	
TOTAL	9	18	18	53	57	34	15	21	21	12	
PPB COMMON	1	1	1	3	3	2	1	1	1	1	
TOTAL	1	1	1	3	3	2	1	1	1	1	
No. 12	Q1										
	Q2			2	2	2					
	Q4			2	4	2		2	2	2	
	Q5			1	1	1					
	Q6			2	2	2		2			
TOTAL			3	8	10	5	5	2	2		
No. 10	SIGNAL COMMON LUMINAIRE (240V)	1	1	1	3	3	2	1	1	1	
	TOTAL	2	2	2	2	2	2	2	2	2	
	TOTAL	3	3	3	5	5	4	3	3	3	
CONDUIT SIZE		2" N	2 1/2" E	2 1/2" E	3 1/2" N	3 1/2" N	2 1/2" E	2 1/2" E	2" N	2" N	

MARCH

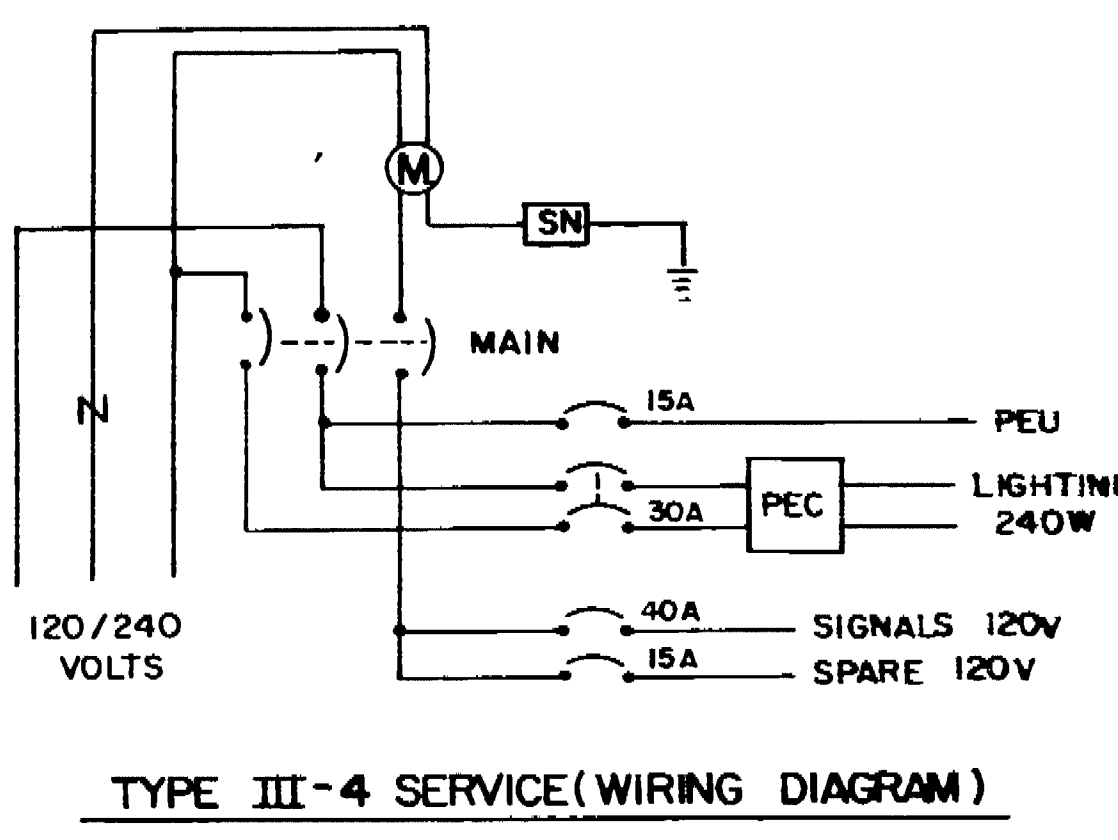


LOCATION	STD.	VEHICLE EQUIPMENT			PED EQUIPMENT			LUMINAIRES
		HEADS	MTG'S.	BACKPLATE	HEADS	MTG'S.	PPBS	
A	26-3-80 40SA5LA	1W3C(GA)PV 1W3C(12)	MAT SV-1-T				1W2C SP-1-T	200W HPS
B	1-B 10'-0"	1W3C(12) 1W3C	TV-2-T				1W2C SP-1-T	
C	17-1-70 20SA5LA	1W3C(12) 1W3C	MAT SV-1-T				1W2C SP-1-T	200W HPS
D	1-B 10'-0"	1W3C(12) 1W3C	TV-2-T				1W2C SP-1-T	
E	26-3-80 40SA5LA	1W3C(GA)PV 1W3C(12)	MAT SV-1-T				1W2C SP-1-T	200W HPS
F	1-B 10'-0"	1W3C(12) 1W3C	TV-2-T				1W2C SP-1-T	
G	17-1-70 20SA5LA	1W3C(12) 1W3C	MAT SV-1-T				1W2C SP-1-T	200W HPS
H	1-B 10'-0"	1W3C(12) 1W3C	TV-2-T				1W2C SP-1-T	

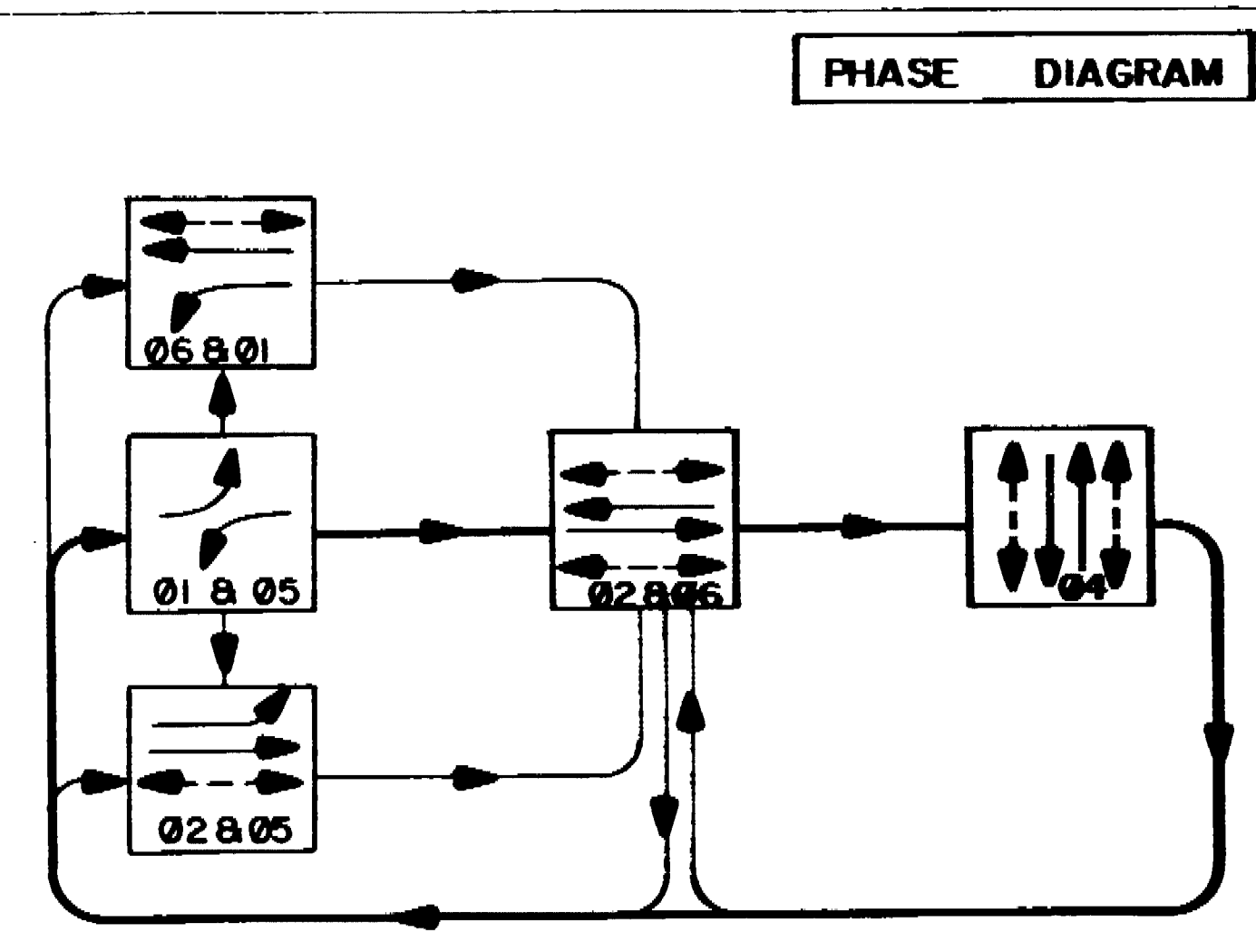
SA = SIGNAL ARM (LENGTH INDICATED)
 LA = LUMINAIRE ARM (LENGTH INDICATED)
 (GA) = GREEN ARROW LENS
 PV = PROGRAMMED VISIBILITY SIGNAL
 12 = 12 INCH RED, YELLOW, GREEN LENS
 (12"GA) = 8" RED, YELLOW WITH 12" GREEN ARROW LENS



TYPICAL TYPE IV LOOP DETECTOR LAY-OUT
 * = FIRST 2 LOOPS ARE QUADRIPOLE WHEN INDICATED ON DETECTOR PHASE

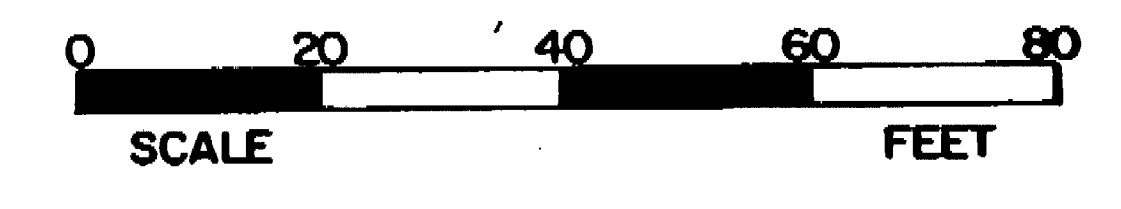


- NOTES**
1. ALL PULL BOXES SHALL BE No. 5 UNLESS OTHERWISE NOTED ON PLAN.
 2. ALL SIGNAL HEADS SHALL HAVE BACK PLATES.
 3. LABEL PEDESTRIAN & SIGNAL COMMON SEPARATELY IN CONTROLLER CABINET.
 4. POLES, PULL BOXES, DETECTORS, AND CONTROLLER POSITIONS SHALL BE LOCATED IN THE FIELD BY THE ENGINEER.
 5. INSTALLATION OF DETECTOR WIRE IN SAW CUTS SHALL BE DONE IN THE PRESENCE OF THE ENGINEER.
 6. INSTALL PHOTO ELECTRIC CONTROL UNIT ON POLE (E) PER ES-6T.
 7. STRIPING SHOWN TO BE DONE BY OTHERS.
 8. THIS PLAN FOR ELECTRICAL WORK.



CONTROLLER PHASE MODULES
 PHASES Q2 & Q6 - TYPE DP
 PHASE Q4 - TYPE SP
 PHASES Q1 & Q5 - TYPE S

FLASHING INDICATIONS:
 ALL PHASES-RED



MARCH LANE AND VENETIAN DR./TYROL LN. TRAFFIC SIGNAL PLAN

DEPARTMENT OF PUBLIC WORKS
 CITY OF STOCKTON, CALIFORNIA

SCALE: AS SHOWN
 DESIGNED BY: AAJ/edj
 DRAWN BY: PEL/ARL/DM
 TRACED BY: [Signature]
 CHECKED BY: AAJ

APPROVED BY: DATE 11/17
 CITY ENGINEER STOCKTON, CALIF.

PREPARED BY
TJKM
 Walnut Creek, California
 [Signature]
 R.C.E. NO 15247

Prepared by: [Signature]
 Checked by: [Signature]
 Date: 7/31/20

