



March 17, 2020

Mr. Alan Montanelli
City of Stockton Municipal Utilities Department
2500 Navy Drive
Stockton, CA 95206

Dear Alan:

**Subject: Western Pacific Industrial Park
Storm Drainage Basin Maintenance District**

On behalf of Siegfried Engineering, Inc., Engineer of Work for the subject maintenance district, I am submitting the following documents for the subject Maintenance District:

1. Proposed 2020-2021 Fiscal Year Budget.
2. Schedule of parcels and assessment amounts for the 2020-2021.
budget and a list of the description of parcels by Assessor Parcel Number (A.P.N.).

Please refer to Amendment No. 11 to the Amended Assessment Diagram for Western Pacific Industrial Park Storm Drainage Basin Maintenance District.

The submittal appropriately addresses the requirements of Proposition 218 in that the parcels within the subject district receive one hundred percent (100%) of special benefits from the subject district and zero percent (0%) of general benefits.

Sincerely,
SIEGFRIED

A handwritten signature in blue ink, appearing to read "Paul J. Schneider", is written over a horizontal line.

Paul J. Schneider, P.E.



PJS/jh

Enclosures

cc: Mr. Kevin Beltz, City of Stockton, Finance Department (w/ encl.)
City of Stockton, City Clerk's Office (w/ encl.)

Stockton
3428 Brookside Rd.
Stockton, CA 95219
t: 209.943.2021

San Jose
111 N. Market St., #300
San Jose, CA 95113
t: 408.754.2021

Sacramento
900 Howe Ave, St #200
Sacramento, CA 95825
t: 916.520.2777

Modesto
100 Sycamore Ave, #100
Modesto, CA 95354
t: 209.762.3580

**WESTERN PACIFIC INDUSTRIAL PARK
STORM DRAINAGE BASIN MAINTENANCE DISTRICT
PROPOSED 2020-2021 FISCAL YEAR BUDGET**

Inspection, Maintenance & Graffiti Control	\$14,850.00
Fence Repairs	\$3,500.00
Operational Costs	\$18,350.00

City of Stockton Publicity and Advertising Costs	\$85.00
Maintenance District Attorney Fee	\$1,432.00
San Joaquin County Processing Fees	\$105.00
District Engineering Annual Engineer's Report	\$2,326.00
Professional Services	\$0.00
City of Stockton Administrative Costs	\$3,500.00
Total Administrative Costs	\$7,448.00

Contingency	\$2,230.00
Total 2020-2021 Budget	\$28,028.00

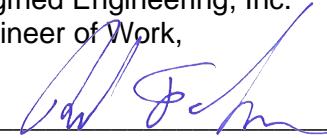
Amount allocated from reserve \$10,708.00

**Amount to be assessed by
Western Pacific Industrial Park \$17,320.00**

The improvements being maintained by this district are a storm water retention basin and appurtenances which are site specific to the parcels being assessed. The improvements and appurtenances do not provide any benefit to any parcel or parcels outside the boundaries of the district. In the opinion of the undersigned, the benefits received by the parcels assessed within the Western Pacific Industrial Park, Storm Drain Maintenance District, from the Western Pacific Industrial Park, Storm Basin Maintenance District, are identified as set forth by Proposition 218 as follows:

Special Benefits-100%
General Benefits - 0%

Siegfried Engineering, Inc.
Engineer of Work,



Paul J. Schneider, P.E.

3/17/2020

Date

WESTERN PACIFIC INDUSTRIAL PARK
STORM DRAINAGE BASIN MAINTENANCE DISTRICT

**Schedule of Parcels, Adjusted Drainage Areas and
Assessment Amounts for 2020-2021 Budget**

March 17, 2020

Maintenance District Assessment No.	Assessor's Parcel Number	Adjusted Drainage Area (Acres)	2020-2021 Assessment Amount
7	177-020-39	0.00	\$0.00
15	177-280-16	0.63	\$26.01
28	177-280-17	0.00	\$0.00
33	177-280-20	5.00	\$206.41
34	177-280-24	10.00	\$412.81
39	177-280-08	2.90	\$119.72
40	177-280-09	3.10	\$127.97
41	177-280-10	5.00	\$206.41
43	177-280-12	7.41	\$305.89
48	177-280-32	24.24	\$1,000.66
59	177-270-04	3.17	\$130.86
60	177-270-05	5.85	\$241.50
71	177-280-14	35.88	\$1,481.17
72	177-280-13	9.55	\$394.24
81	177-270-24	2.69	\$111.05
82	177-270-23	4.60	\$189.89
90	177-020-56	18.51	\$764.12
91	177-020-57*	0.80	\$33.03
92	177-020-58*	0.71	\$29.31
93	177-020-59	10.35	\$427.26
96	177-270-20	20.16	\$832.23
99	177-280-42*	0.47	\$19.40
100	177-280-43	5.65	\$233.24
101	177-280-44	11.04	\$455.75
102	177-280-45*	0.91	\$37.57
103	177-280-48	10.30	\$425.20
104	177-280-51	0.14	\$5.78
106	177-280-21	23.72	\$979.19
109	177-020-68	0.79	\$32.61
111	177-280-59	3.95	\$163.06
112	177-280-60	3.45	\$142.42
113	177-020-73	9.12	\$376.49
114	177-270-29	27.36	\$1,129.46
115	177-280-58	9.11	\$376.07
116	177-270-30	5.93	\$244.80
117	177-270-31	14.51	\$598.99
118	177-020-76	20.88	\$861.95
119	177-020-77	45.67	\$1,885.32
120	177-020-41	0.81	\$33.44
121	177-020-42	1.51	\$62.33
122	177-280-61	53.69	\$2,216.40
		419.56	\$17,320.00

* - Indicates parcel to be hand billed

DO NOT SEND PARCELS REQUIRING SEPARATE BILLING TO COUNTY AUDITOR

AMENDMENT NO. 11 TO
ASSESSMENT DIAGRAM

WESTERN PACIFIC INDUSTRIAL PARK
STORM DRAINAGE BASIN MAINTENANCE DISTRICT
CITY OF STOCKTON, COUNTY OF SAN JOAQUIN, CALIFORNIA
BEING A PORTION OF SECTIONS 23 & 24, C.M. WEBER GRANT
MARCH, 2020

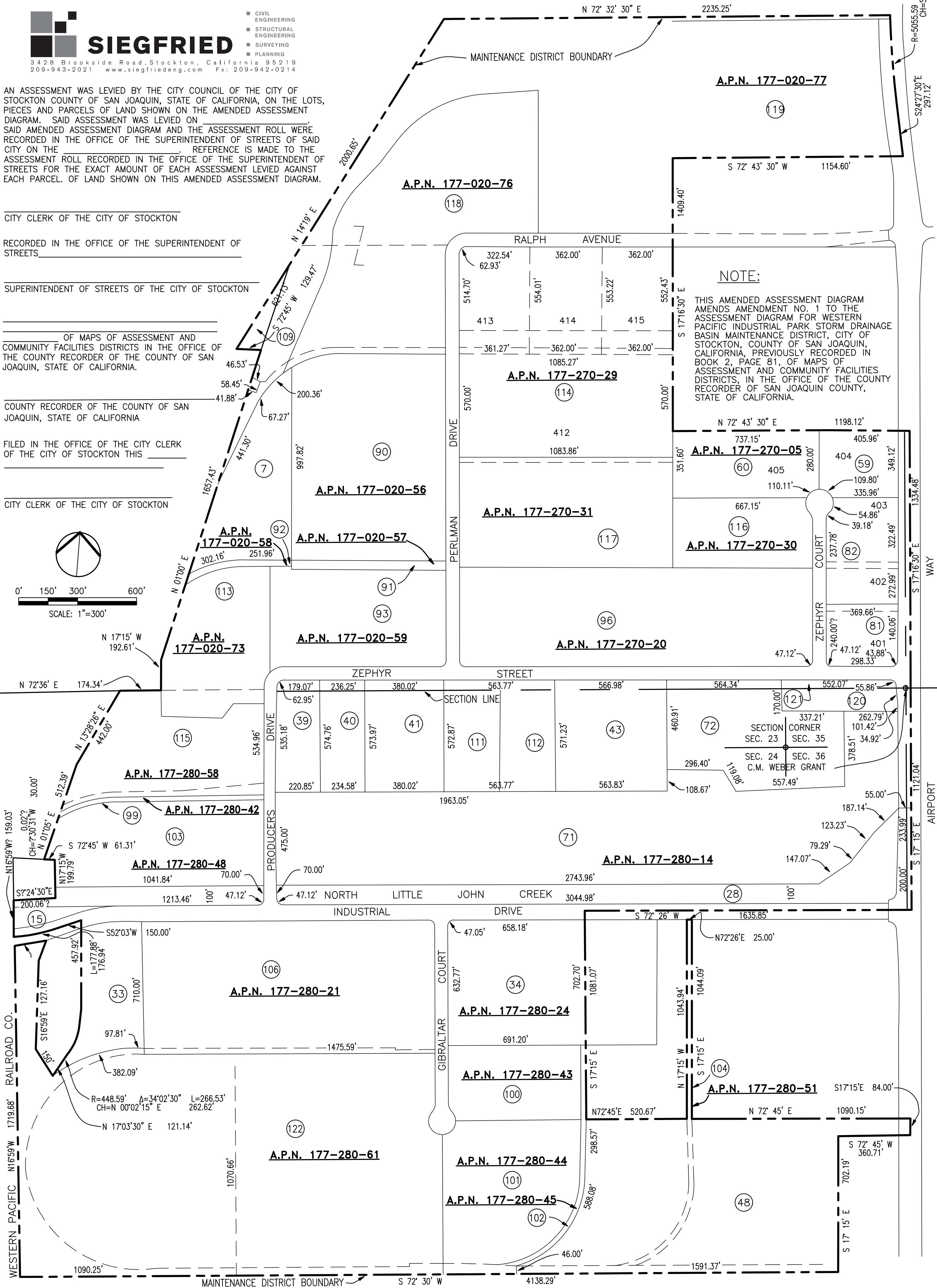
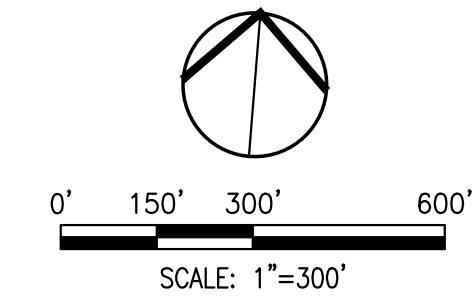


NOTES

1. THIS MAINTENANCE DISTRICT CONTAINS 469.641 ACRES, MORE OR LESS.
2. BASIS OF BEARINGS: THE NORTH LINE OF INDUSTRIAL DRIVE WHICH BEARS N 72° 26' E.
3. (22) DENOTES MAINTENANCE DISTRICT PARCEL NUMBER.
4. - - - - - DENOTES MAINTENANCE DISTRICT BOUNDARY.

AN ASSESSMENT WAS LEVIED BY THE CITY COUNCIL OF THE CITY OF STOCKTON COUNTY OF SAN JOAQUIN, STATE OF CALIFORNIA, ON THE LOTS, PIECES AND PARCELS OF LAND SHOWN ON THE AMENDED ASSESSMENT DIAGRAM. SAID ASSESSMENT WAS LEVIED ON SAID AMENDED ASSESSMENT DIAGRAM AND THE ASSESSMENT ROLL WERE RECORDED IN THE OFFICE OF THE SUPERINTENDENT OF STREETS OF SAID CITY ON THE REFERENCE IS MADE TO THE ASSESSMENT ROLL RECORDED IN THE OFFICE OF THE SUPERINTENDENT OF STREETS FOR THE EXACT AMOUNT OF EACH ASSESSMENT LEVIED AGAINST EACH PARCEL OF LAND SHOWN ON THIS AMENDED ASSESSMENT DIAGRAM.

CITY CLERK OF THE CITY OF STOCKTON
RECORDED IN THE OFFICE OF THE SUPERINTENDENT OF STREETS
SUPERINTENDENT OF STREETS OF THE CITY OF STOCKTON
OF MAPS OF ASSESSMENT AND COMMUNITY FACILITIES DISTRICTS IN THE OFFICE OF THE COUNTY RECORDER OF THE COUNTY OF SAN JOAQUIN, STATE OF CALIFORNIA.
COUNTY RECORDER OF THE COUNTY OF SAN JOAQUIN, STATE OF CALIFORNIA
FILED IN THE OFFICE OF THE CITY CLERK OF THE CITY OF STOCKTON THIS
CITY CLERK OF THE CITY OF STOCKTON



NOTE:
THIS AMENDED ASSESSMENT DIAGRAM AMENDS AMENDMENT NO. 1 TO THE ASSESSMENT DIAGRAM FOR WESTERN PACIFIC INDUSTRIAL PARK STORM DRAINAGE BASIN MAINTENANCE DISTRICT, CITY OF STOCKTON, COUNTY OF SAN JOAQUIN, CALIFORNIA, PREVIOUSLY RECORDED IN BOOK 2, PAGE 81, OF MAPS OF ASSESSMENT AND COMMUNITY FACILITIES DISTRICTS, IN THE OFFICE OF THE COUNTY RECORDER OF SAN JOAQUIN COUNTY, STATE OF CALIFORNIA.

R=5055.59
CH=S22°00'28"E
L=432.47
A=04°54'05"

S24°27'30"E
L=297.12

S 17°16'30" E
L=1334.48

S 17°15' E
L=1121.04

S 17°15' E
L=200.00

S 17°15' E
L=702.19

REVISED: 3-4-87 6-15-93 9-1-00 4-1-13
3-23-88 4-28-95 6-3-04 7-17-18
4-5-93 5-19-98 6-11-07 3-1-2020